

# Roll-Up Signs- east

## FACT SHEET



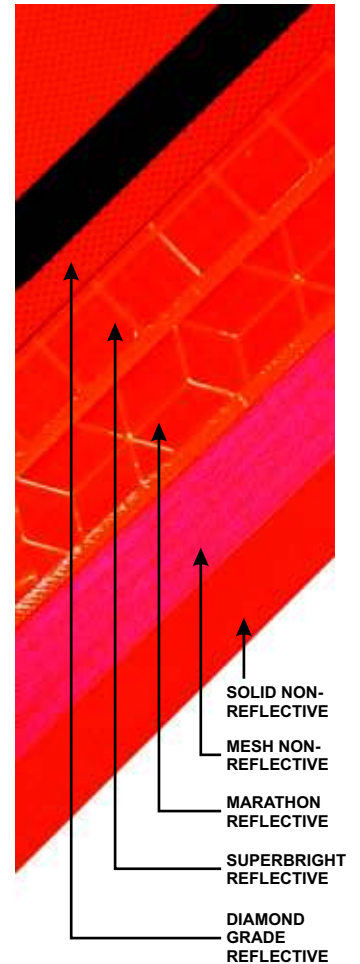
### Roll-Up Signs:

Below are part numbers for our most popular roll-up signs. Part numbers for other sizes, configurations, and colors are available on request. ● denotes standard 36" and 48" sign styles kept in stock for immediate shipping in selected legends (see page 2).

NON-REFLECTIVE - Orange			
PART NUMBER	SIZE	MATERIAL	RIBS - THICKNESS (Vertical & Horizontal)
● RUM36-200	36" X 36"	Mesh Vinyl	1/4" & 3/16"
RUM36-SO	36" X 36"	"	No Ribs
● RUM48-200	48" x 48"	"	1/4" & 3/16"
RUM48-SO	48" x 48"	"	No Ribs
● RUNR36-200	36" X 36"	Solid Vinyl	1/4" & 3/16"
RUNR36-SO	36" X 36"	"	No Ribs
● RUNR48-200	48" x 48"	"	1/4" & 3/16"
RUNR48-SO	48" x 48"	"	No Ribs

REFLECTIVE - Orange			
PART NUMBER	SIZE	MATERIAL	RIBS - THICKNESS (Vertical & Horizontal)
● RUR36-200	36" X 36"	Superbright™	1/4" & 3/16"
RUR36-SO	36" X 36"	"	No Ribs
RUR48-100	48" x 48"	"	5/16" & 3/16"
● RUR48-200	48" x 48"	"	1/4" & 3/16"
RUR48-SO	48" X 48"	"	No Ribs
RUR36MAR-200	36" X 36"	Marathon™	1/4" & 3/16"
RUR36MAR-SO	36" X 36"	"	No Ribs
RUR48MAR-100	48" x 48"	"	5/16" & 3/16"
RUR48MAR-200	48" x 48"	"	1/4" & 3/16"
RUR48MAR-SO	48" X 48"	"	No Ribs
RUR36DG-200	36" X 36"	Diamond Grade™	1/4" & 3/16"
RUR36DG-SO	36" X 36"	"	No Ribs
RUR48DG-100	48" x 48"	"	5/16" & 3/16"
RUR48DG-200	48" x 48"	"	1/4" & 3/16"
RUR48DG-SO	48" X 48"	"	No Ribs

### Sign Materials:



### Overlays:

Overlays are patches of matching sign material that may be printed with words, numbers, or arrows and attached to signs to change their message. For example, a 1/2 MILE overlay may be placed over the word AHEAD on a ROAD WORK AHEAD sign so it reads ROAD WORK 1/2 MILE.

NON-REFLECTIVE OVERLAYS	
PART NUMBER	MATERIAL
FPO36M	Mesh Vinyl
FPO48M	"
FPO36NR	Solid Vinyl
FPO48NR	"

REFLECTIVE OVERLAYS	
PART NUMBER	MATERIAL
FPO36R	Superbright™
FPO48R	"
FPO36MAR	Marathon™
FPO48MAR	"
FPO36DG	Diamond Grade™
FPO48DG	"



## DICKE SAFETY PRODUCTS

www.dicketool.com

Illinois - 1201 Warren Avenue • Downers Grove, IL 60515 • Ph: 630.969.0050 • Fax: 630.969.3973  
 Oregon - 1845 Anunsen Street, N.E. • Salem, OR 97301 • Ph: 800.333.5641 • Fax: 503.364.0340

# Roll-Up Signs- east

## FACT SHEET



### Standard Legends:

Legends marked with a ● are 36" and 48" signs complete with fiberglass rib sets that are kept in stock for immediate shipping in reflective Super Bright™ and non-reflective (solid and mesh) materials. Legends in **bold pink** are typically used for emergency traffic control situations and are usually reflective pink however all legends may be printed on any reflective or non-reflective material. Custom legends are available for an additional temporary screen fee. Most legends may be equipped with velcro strips to allow overlays to be utilized.

#### ACCIDENT AHEAD

ACCIDENT AHEAD RIGHT LANE  
 ACCIDENT DETOUR AHEAD  
 ARROW LEFT 45°  
 ARROW RIGHT 45°  
 ● BE PREPARED TO STOP  
 BEGIN MOWING ZONE  
 BLASTING ZONE TURN OFF 2-WAY RADIO  
 BORDER ONLY  
 BRIDGE INSPECTION CREW  
 BUMP  
 BUMP AHEAD  
 CAUTION HIGH WATER  
 CAUTION LOG TRUCKS  
 CAUTION PEDESTRIAN CROSSING SYMBOL  
 CAUTION SMOKE OR FOG AHEAD  
 COMMAND POST  
 DETOUR AHEAD  
 DIP

#### EMERGENCY SCENE AHEAD

EMERGENCY TRUCK REPAIR AHEAD  
 END MOWING ZONE  
 END ROAD WORK  
 END UTILITY WORK  
 EQUIPMENT IN RIGHT LANE  
 EXIT (WITH 45° UP RIGHT ARROW)  
 EXIT CLOSED

#### FIRE ACTIVITY AHEAD

#### FIRE TRAINING AHEAD

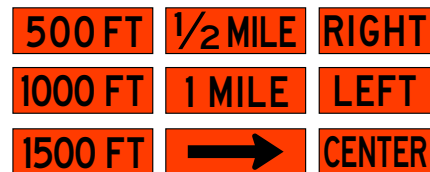
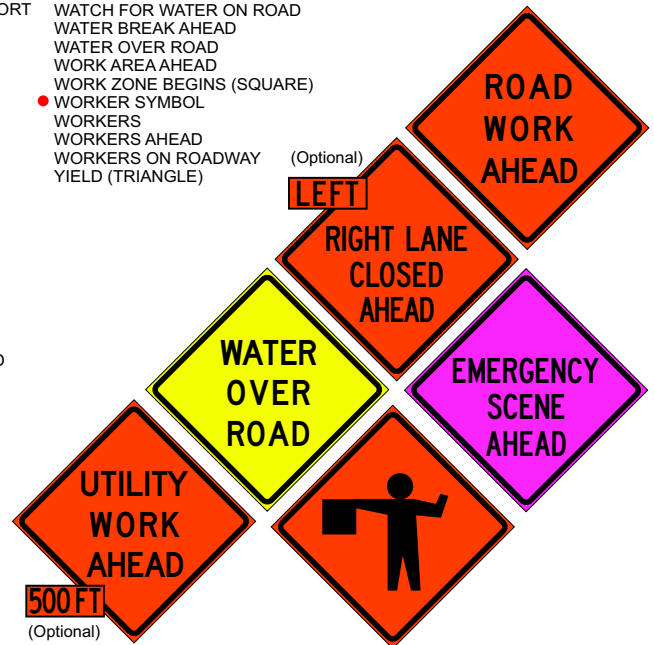
FIRE TRAINING CENTER  
 ● FLAGGER AHEAD  
 ● FLAGGER SYMBOL  
 FLAGMAN AHEAD  
 FRESH OIL  
 FRESH OIL LOOSE GRAVEL  
 FRESH TAR  
 GIVE US A BRAKE SLOW DOWN  
 GUARDRAIL DAMAGE AHEAD  
 HEAVY EQUIPMENT CROSSING  
 HIGH WATER  
 HIT A WORKER \$10,000 FINE 14 YRS IN PRISON

#### INCIDENT AHEAD

LANE CLOSED AHEAD  
 LANE SHIFT LEFT ARROW (SYMBOL)  
 LANE SHIFT RIGHT ARROW (SYMBOL)  
 LEFT LANE CLOSED  
 LEFT LANE CLOSED AHEAD  
 LITTER CREW AHEAD  
 LITTER PICK-UP AHEAD  
 LOG TRUCKS ENTERING HIGHWAY  
 LOW SHOULDER  
 ● MEN WORKING  
 MEN WORKING AHEAD  
 MERGE AHEAD  
 MERGE LEFT  
 MERGE RIGHT  
 MERGE WITH LEFT ARROW  
 MERGE WITH RIGHT ARROW  
 MOWERS AHEAD  
 MOWING AHEAD  
 MOWING OPERATIONS AHEAD

MOWING ZONE  
 NO CENTER STRIPE  
 NO PHONE ZONE  
 NO RIGHT TURN  
 ● ONE LANE ROAD AHEAD  
 ONE LANE AHEAD  
 PIPELINE CONSTRUCTION AHEAD  
 PIPELINE CROSSING AHEAD  
 POT HOLE REPAIR AHEAD  
 POWER LINES WITH UP ARROW  
 PREPARE FOR SUDDEN STOP  
 PREPARE TO STOP  
 PRESCRIBED BURN AHEAD  
 PRESCRIBED BURN AHEAD DO NOT REPORT  
 RAMP WORK AHEAD  
 REDUCED SPEED AHEAD  
 RESUME SPEED THANK YOU  
 RESTROOM BUILDING CLOSED  
 ● RIGHT LANE CLOSED  
 ● RIGHT LANE CLOSED AHEAD  
 RIGHT SHOULDER CLOSED AHEAD  
 RIGHT TURN LANE CLOSED  
 RIGHT TWO LANES CLOSED  
 ROAD CLOSED  
 ● ROAD CLOSED AHEAD  
 ROAD CLOSED TO THRU TRAFFIC  
 ROAD FLOODED  
 ROAD MACHINERY AHEAD  
 ● ROAD WORK AHEAD  
 ROAD WORK AHEAD FRESH OIL  
 ROUGH ROAD  
 SAFETY BELT ENFORCEMENT ZONE  
 SAFETY RESTRAINT CHECKPOINT AHEAD  
 SHOULDER CLOSED  
 SHOULDER DROP-OFF  
 SHOULDER WORK  
 SHOULDER WORK AHEAD  
 SIDEWALK CLOSED  
 SLIPPERY WHEN WET SYMBOL  
 SLOW  
 SLOW SOBRIETY CHECKPOINT AHEAD  
 SOFT SHOULDER  
 SPEED LIMIT XX  
 SPRAYING OPERATIONS AHEAD  
 STATE POLICE SAFETY CHECK  
 STEEL PLATE IN ROADWAY  
 STOP AHEAD  
 STOP SLOW SYMBOL (FULL STAFF)  
 STOP (OCTAGON)  
 SURVEY CREW  
 SURVEY CREW AHEAD  
 SWEEPER AHEAD  
 TELEPHONE WORKERS AHEAD  
**TOW TRUCK AHEAD**  
**TRAFFIC EMERGENCY AHEAD**  
 TRAFFIC FINES DOUBLE IN WORK ZONES  
 TRAFFIC FINES DOUBLED IN WORK ZONES  
 TRAFFIC SURVEY AHEAD  
**TRAINING EXERCISE AHEAD**  
 TRANSITION LEFT SYMBOL  
 TRANSITION RIGHT SYMBOL

TREE WORK AHEAD  
 TRUCK CROSSING  
 TRUCK SCALES AHEAD  
 TRUCKS ENTERING  
 TRUCKS ENTERING AND LEAVING HIGHWAY  
 TRUCKS ENTERING HIGHWAY  
 TRUCKS HAULING  
 UNEVEN LANES  
 UTILITY CONSTRUCTION AHEAD  
 ● UTILITY WORK AHEAD  
 UTILITY WORKERS AHEAD  
 WATCH FOR SLOW TRAFFIC  
 WATCH FOR STOPPED TRAFFIC  
 WATCH FOR WATER ON ROAD  
 WATER BREAK AHEAD  
 WATER OVER ROAD  
 WORK AREA AHEAD  
 WORK ZONE BEGINS (SQUARE)  
 ● WORKER SYMBOL  
 WORKERS  
 WORKERS AHEAD  
 WORKERS ON ROADWAY  
 YIELD (TRIANGLE)



Standard overlays attach to signs with velcro. Many other messages available on request



## DICKE SAFETY PRODUCTS

[www.dicketool.com](http://www.dicketool.com)

Illinois - 1201 Warren Avenue • Downers Grove, IL 60515 • Ph: 630.969.0050 • Fax: 630.969.3973  
 Oregon - 1845 Anunsen Street, N.E. • Salem, OR 97301 • Ph: 800.333.5641 • Fax: 503.364.0340