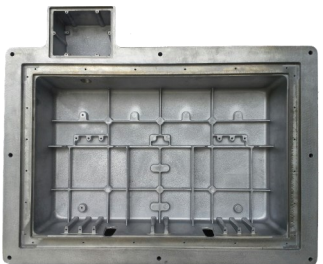
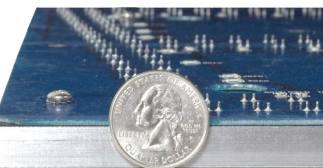


## TC-600 Radar Speed Sign

*Built for Safety, Built to Last*



Heavy duty aircraft aluminum housing



3/8" Bashplate protects LEDs



1/4" polycarbonate cover



Proudly Engineered and  
Manufactured in the USA

**Durable Design:** Radarsign's built for purpose design is the most vandal resistant radar speed sign on the market today.

- Heavy-duty aircraft aluminum housing with an armored 3/8" thick Bashplate™ and 1/4" Makrolon® polycarbonate cover provide superior protection to the internal components of the radar speed sign from external force and weather.
- Beveled design of the armored Bashplate™ protects LEDs and internal components from damage by dissipating force inflicted on the sign.

**Exceptional Visibility:** 13" full matrix LED display with directional beam technology delivers a superior quality display for drivers, even in bright sunlight. Radarsign's proprietary design serves as a cone, magnifying the intensity of the light, and pinpoints it directly to the view of approaching drivers. Easily readable up to 600 feet.

### Flashing Speed/Message Alert Choices

- Speed Alert choices: Slow flash of actual speed; Fast flash of actual speed; *SLOW DOWN* message; *TOO FAST* message; Simulated camera flash (optional)
- Display on-off feature allows traffic data collection continue even when the display is off (stealth mode).
- Delay option to alert speeders above posted speed limit.

**Faceplate:** 28"W x 33"H YOUR SPEED faceplate with 4" high lettering; Available in white, fluorescent yellow/green, or safety orange.

**Design Standards:** NEMA 4R level compliant; meets or exceeds MUTCD design guidelines; Makrolon® polycarbonate cover provides maximum UV protection and is abrasion, shatter, and graffiti resistant.

**Batteries:** Batteries are designed to slide into housing slots without any danger of movement; Maintenance is limited to battery changes every three to six years.

**Radar:** Detects vehicles up to 1200 feet away.

**Wi-Fi Enabled:** Allows access to program signs from most any web enabled devices (Apple devices, Android devices, Windows devices, etc.).

**Power Options:** Available in AC powered and solar powered models.

**Ideal for:** 10-45 mph speed limit roads or lower

**Warranty:** Two year warranty on parts and labor, including batteries; Does not cover malicious abuse, theft, or damage due to unauthorized modification.

### Optional Features:

**Streetsmart Traffic Data Reporting:** Records traffic data that can be used to confirm date, time, and severity of speeding problem.

**EZ Comm:** Allows a secure, cellular-based, remote management of your radar speed signs.

**External Device Relay Switch:** Triggers external devices from the radar speed sign based on time and/or speed, or temperature.

**Poles:** Aluminum or black decorative poles with FHWA safety compliant breakaway bases



# TC-600 Radar Speed Sign Specifications

## Power Options/Battery Specifications

### TC-600S (Solar Powered)

- Solar Panel Output: 40 watt
- Power Supply: Two 12-volt, 18 amp/hour AGM batteries (UL recognized); provides up to 14 days of operation.
- Solar Charge Controller: Manages the flow of solar energy input (up to 85w) from solar panel to battery
- Pole Mount: Side pole mount with 45° angle bracket for effective solar charging
- Software Control: SmartCharge® software prevents overcharging and intelligent shutdown when battery falls below acceptable voltage; auto restart when sufficiently recharged
- Battery Status: Via Wi-Fi can check battery charge levels and solar amperage
- Power Consumption: < 2.0 amps in active mode; Idle mode < 1/2 watt; Circuit Breaker: Multi-circuit, 3x10 amp fuses

### TC-600A (AC Powered)

- Power Supply: Hard wire to 100V-240V power supply
- Power Consumption: < 2.0 amps in active mode; Idle mode < 1/2 watt; Circuit Breaker: Multi-circuit, 10 amp fuse

## Housing Specifications

### Radar Speed Sign Housing

- Dimensions: 18.5"H x 26.25W x 5.0"D
- Thickness: .1875" to .25" thick, heavy-duty aluminum
- NEMA 4R level compliant
- Humidity Maximum: 100%
- Non-sealed and ventilated
- Provides maximum protection from the elements and vandalism

### Bashplate™ with LED Cones

- Internal .375" aluminum shield over LED display to protect components from abuse or vandalism.
- Individual holes for each LED focus and reflect light toward the road, providing the highest quality viewable display with minimum energy usage.

### LEDs

- 2 digits, 13" high super bright amber full matrix LEDs (life up to 100,000 hours)
- Easily readable up to 600 feet
- Automatic intensity adjustment to ambient light conditions for maximum visibility
- Provides directed viewing or display to oncoming traffic

### Makrolon® Polycarbonate Display Cover

- .25" thick protective cover
- Abrasion, graffiti and shatter resistant
- UV protection

## Weight and Operating Temperatures

### Weight

- TC-600S (Solar Powered): 41 lbs, (67 lbs w/batteries)
- TC-600A (AC Powered): 41 lbs.

### Operating Temperatures

- -40 F to +138 F

## Display and Radar Specifications

### YOUR SPEED Faceplate

- 28"W x 33"H YOUR SPEED faceplate with 4" high lettering
- MUTCD compliant colors and reflectivity
- Ideal for 10-45 mph speed limit roads
- Available in white, fluorescent yellow/green, or safety orange

### Flashing Speed Alert Choices

- Slow flash of actual speed; Fast flash of actual speed; *SLOW DOWN* message; *TOO FAST* message; Simulated camera flash (optional)
- Display speed and custom message alert message alternately

### Radar

- Type: K Band, single direction Doppler radar, FCC part 15 compliant; no license required
- Sensor Range: Detects vehicles up to 1200 feet
- Beam Width: 12 degrees, +/- 2 degrees
- Operating Frequency: 24.125 GHz, +/- 50 MHz
- Accuracy: +/- 1.0 mph
- Speed Detection Range: 5 - 127 mph

## Standard Programming / Wi-Fi

- On/Off Timer Options: 4 timers per day, also by day of week. Settings allow lower speed limits for school zone times and for late night display shutoff.
- Display On/Off: Allows traffic data collection to continue even when display is off.
- Display Brightness Control: Auto adjusts to light conditions, up to 100 levels.
- Setup Functions: Easy to follow menu – software managed, no mechanical switches to operate.
- Maximum Speed Cutoff: Prevents unwanted high speed displays; up to 99 mph; discourages "racing" of sign. Choice of flashing matrix, or LED display cutoff.
- Date/Time Control: Battery backed real-time clock auto-adjusts for daylight savings time.

### Wi-Fi Enabled

- Allows access to program signs from most web enabled devices (Apple devices, Android devices, Windows devices, etc)
- WPA2 encrypted security
- Password protection
- Range of up to 300 feet from sign

## Traffic Data Reporting

### StreetSmart (optional)

- Use StreetSmart traffic data reporting software to report, organize, and analyze speed and traffic data
- The information collected by the radar sign is loaded into Excel™ ready .csv files, and can generate 35 charts and graphs.

### Mini SD Memory Card

- System Storage Capacity: stores data on up to 5 million vehicles; Retains data for retrieval for 12 months.

## Warranty

- 2 year warranty on parts and labor, including batteries. Exceptions: Does not cover malicious abuse, theft, or damage due to unauthorized modification. Optional third year warranty extension available.